



Highlights

- Enriches portals and key business applications with federated access to content stored in multiple systems
 - Provides content integration when used by itself and content federation when used together with IBM FileNet Content Federation Services in IBM FileNet Content Manager software
 - Accelerates and simplifies development of content-centric applications
 - Gains more value and insight from existing repository investments
-

IBM Content Integrator Enterprise Edition, Version 8.5.1

Information On Demand

Today's organizations need unabated access to enterprise information. People, processes and applications need the right information at the right time to support decision making and enable action. Information On Demand, the foundation of the IBM Information Management business, is designed to help companies integrate, analyze and optimize heterogeneous information to manage risk and deliver business insight. IBM Content Integrator Enterprise Edition (IBM Content Integrator) software, a key component of the Information On Demand strategy, delivers federated access to the vast majority of information that lives in disparate content management systems. It makes disparate IBM and non-IBM content sources look and act as a single unified repository, and provides a platform for deploying applications and workflows spanning multiple content sources. Version 8.5.1 also extends service-oriented architecture (SOA)-style interfaces and capabilities, enhances globalization, provides better support for IBM data sources, and includes new pre-configured connectors, a streamlined installation and deployment process, and improved platform support. Additionally, version 8.5.1 can be deployed natively on the IBM System z® and Linux® on System z platforms.

Unlock the value of isolated content assets

Many organizations today have multiple content management and workflow systems as a result of investments, mergers and acquisitions. Industry analysts generally agree that the majority of organizations are supporting multiple repositories. Consequently, critical content is trapped in isolated silos, significantly complicating application development and undermining key business initiatives, such as customer service, regulatory compliance, research and intelligence, and the ability to realize synergies from mergers and acquisitions.



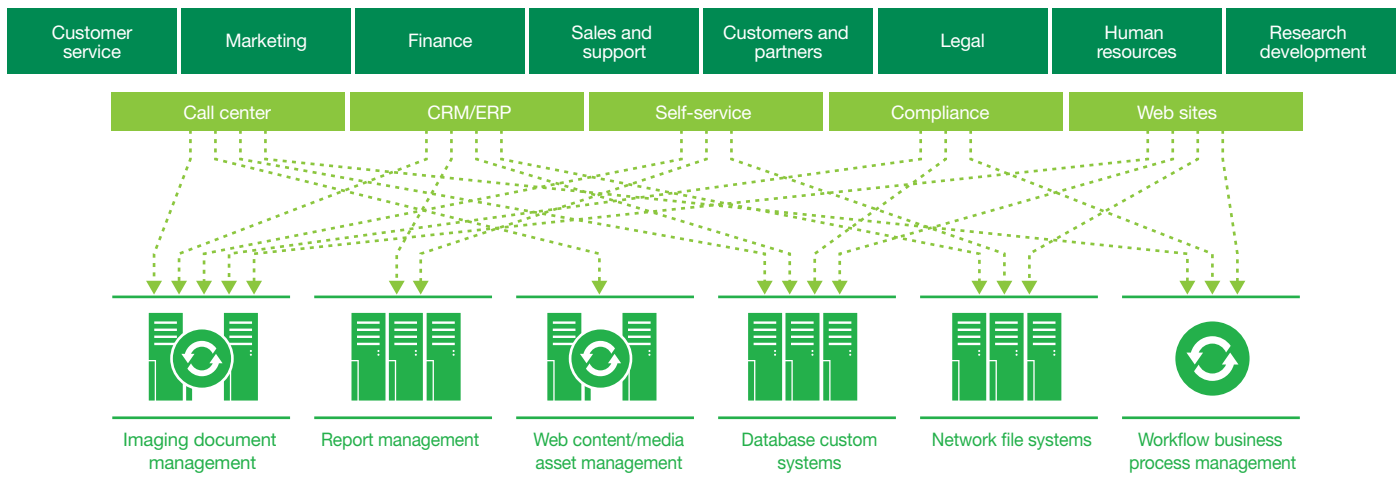


Figure 1: Point-to-point integrations increase the complexity of ECM operations, adding significant ongoing costs and decreasing organizations’ abilities to manage changes to the business environment.

Too often organizations rely on homegrown point-to-point integrations to gain access to valuable content. These integrations exponentially increase the complexity, risk and cost of an enterprise content management (ECM) operation, since they require staff to maintain knowledge of each separate content system. Plus, any change to any of the systems can break the integration along with any processes built on it. Organizations need the ability to manage content integration centrally and consistently so they can adapt quickly and effectively to changes in their operating environment.

IBM Content Integrator software enables organizations to quickly unify these content silos to improve access, reuse and control of distributed content assets, and to reduce the cost and complexity associated with creating content-centric applications.

By providing a consistent, bidirectional interface to disparate content sources, Content Integrator software enables organizations to quickly integrate their business applications with the various content repositories that store documents, images, reports, digital assets, e-mail and other important business content. This allows users to access and work with distributed content as if it were stored and managed in a single repository and “future-proofs” applications by providing a flexible, highly scalable abstraction layer that supports repository-independent applications. By simplifying repository integration and change management, Content Integrator software can help organizations yield a measurable reduction in the costs and risks of ECM operation.

A proven, enterprise-class approach to content integration

Based on an SOA, IBM Content Integrator software provides rich, standards-based access to disparate content repositories and workflow systems. IBM Content Integrator software is fully compliant with Java™ Platform, Enterprise Edition (J2EE) technology, compatible with Web services and based on three service layers.

Facilitates SOA deployment and awareness

IBM Content Integrator software is SOA compliant and provides a published Web Services Description Language (WSDL), allowing other SOA-aware applications to communicate and interact with each other. Its new application programming interfaces (APIs) are stateless with high grain functionality for query, export and transform functions. Content Integrator, Version 8.5.1 software further extends these services with document and folder creation, update and delete capabilities. These capabilities ensure that content integration can be an essential part of SOA initiatives.

Supports the IBM z/OS platform and Linux on z/OS

Content Integrator, Version 8.5.1 software introduces full support for IBM z/OS® operating system deployment, native on the z/OS platform and through Linux on the z/OS platform. Content Integrator software now can be deployed directly with IBM Content Manager and Content Manager OnDemand software on the z/OS platform, reducing network and conversion overhead for better processing performance in z/OS operating environments.

Content Integrator, Version 8.5.1 also provides native deployment on Linux on the z/OS platform for organizations that need to consolidate server farms and take full advantage of the economic efficiencies of IBM System z hardware without requiring their IT staff to have knowledge of the z/OS operating system to manage the applications. Both options

allow connectors to run on distributed platforms (including the Microsoft® Windows® and UNIX® platforms) to provide greater flexibility in deployment and operation.

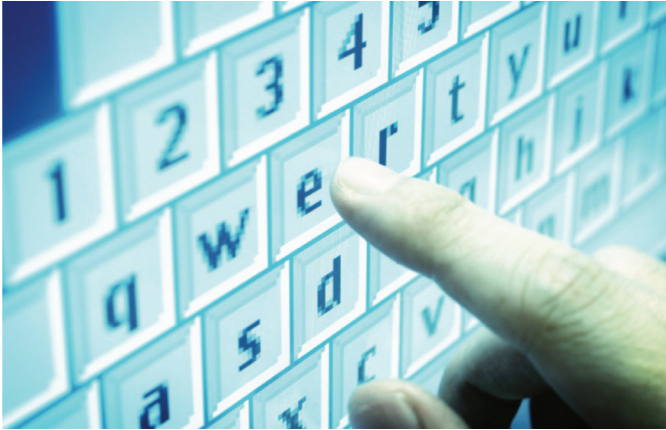
Delivers robust integration services

IBM Content Integrator integration services provide bidirectional access to the underlying information and functionality of content and workflow systems. IBM offers a library of prebuilt connectors to many commercial systems and a toolkit for building custom connectors. These connectors normalize the vendor-specific API calls of underlying repositories and provide real-time, bidirectional access to the native content, processes and metadata stored in these systems.

IBM Content Integrator software does not replicate content. It provides real-time access to content in place, allowing the repository to continue to service existing applications.

Integration services expose all of the basic library services and the specialized functionality of underlying repositories, and provide repository profiling capabilities that make differences in functionality between repositories seamless to the end user. Integration services allow users to:

- Create, delete and browse folders.
- Check in, check out and modify content.
- Add new content.
- File and unfile content in folders.
- Retrieve folders and folder contents.
- View and update metadata.
- View and update security.
- View and create versions.
- Revert to previous versions.
- Work with renditions and compound documents.
- View active workflow items across workflow queues.
- Suspend, resume and complete workflow items.
- Create new workflow items.



Provides federation services that support numerous capabilities

When IBM Content Integrator software is used in conjunction with the Content Federation Services feature in IBM FileNet® Content Manager 4.5 software, metadata from disparate repositories is federated into the IBM FileNet P8 content engine. There it appears as native FileNet P8 content and becomes available to FileNet P8 applications providing search and retrieval, records management and business process management (BPM) capabilities.

- **Content views** allow organizations to create a single logical view of content related to a specific process or topic—regardless of where the content is stored and managed. These content views remove barriers imposed by disparate content sources and make content appear as if it were organized in a virtual repository.
- **Federated search capabilities** enable property-based and full-text queries against multiple repositories, returning an aggregated result set. This feature also allows users to create saved searches for enhanced productivity.
- **Metadata mapping services** normalize index values across multiple systems. This makes it easier to define a common data model for working with content stored in multiple disparate repositories.
- **Single sign-on capabilities** encrypt and store repository credentials, allowing users to log in to multiple underlying systems through a single authentication process. This capability can also integrate with existing Lightweight Directory Access Protocol (LDAP) infrastructures.
- **Identity-aware repository session pools** can be easily configured within the administration tool and can be used to improve application performance by reducing the number of repository log-ins and log-outs, and to manage the use of repository resources by limiting repository connections during peak activity.
- **Optional view services** enable organizations to convert specialized document and image formats into browser-readable renditions on the fly. View services can convert more than 150 document types into browser-readable formats so they can be displayed natively within a browser, including standard business formats and specialized formats such as tagged image file format (TIFF) and Mixed Object:Document Content Architecture (MOD:CA). View services also provide a signed Java applet for annotations, printing and client-side image manipulation. Because Content Integrator software isolates client functions from its APIs, clients can call federated content and render it on the fly.

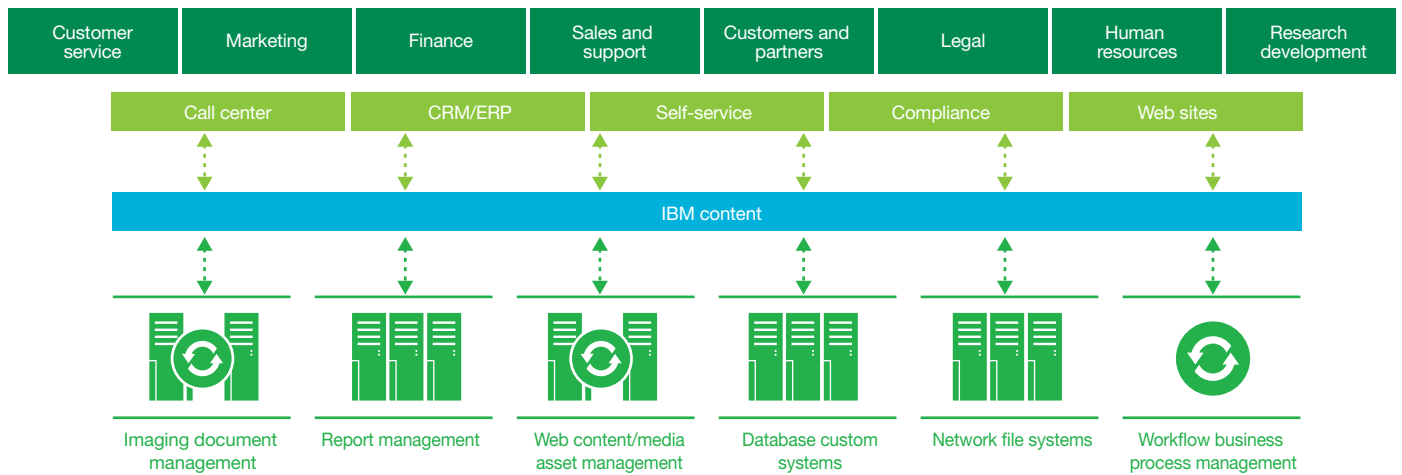


Figure 2: IBM Content Integrator software enables organizations to federate multiple, disparate content repositories and workflow systems.

Includes developer services

IBM Content Integrator developer services provide several options for making distributed content and processes, as well as the functionality around the content and processes accessible within user interfaces and client applications.

Web components deliver access to the information and features of both content and workflow systems, including:

- Folder, workflow queue and virtual repository navigation.
- Content and workflow queries.
- Content list.
- Content, folder and workflow item creation.
- Content and workflow item update.

Developer services also include a rich Java API and SOA-style Web service implementation.

Architectural highlights include the following:

- Offers SOA
- Runs on multiple platforms, including IBM z/OS and Linux on z/OS platforms
- Is fully compliant with J2EE and compatible with Web services
- Supports IBM WebSphere® Application Server and Oracle WebLogic Server software
- Supports component distribution and load balancing
- Supports URL-addressable functions

Content integration: a key part of Information On Demand

Content is critical for today's on demand business. To be productive and support compliance, today's organizations need to break down content silos and unlock the value of trapped information. IBM Content Integrator software is a key part of today's information infrastructure, helping organizations to:

- **Achieve the key benefits of consolidation.** Many organizations rely on IBM Content Integrator software as the basis of their integrated content infrastructure. This enables companies and public sector agencies to achieve the unification benefits of consolidation without the time, cost and process disruption of a "rip and replace" initiative.
- **Create a day-forward migration toward a common infrastructure.** IBM Content Integrator software also provides the means to physically migrate content away from various legacy repositories over time. This allows organizations to reduce the cost and complexity of their content infrastructure as part of a phased migration strategy.
- **Incorporate distributed content into your data integration initiatives.** The vast majority of enterprise information is unstructured, but, for most organizations, it is an untapped asset within business intelligence and data integration initiatives. IBM Content Integrator software can be deployed together with WebSphere Federation Server software to provide federated access to all classes of information—structured and unstructured, mainframe and distributed, public and private.

Make IBM Content Integrator software part of your information management strategy

IBM Content Integrator software helps organizations break down barriers to isolated content assets and unlock the value of the information trapped within. IBM Content Integrator software is a key part of on demand business, allowing organizations to make better-informed decisions, manage more-efficient and compliant processes and reduce the cost and complexity of building content-centric applications.

IBM Content Integrator Enterprise Edition—prebuilt connectors

- IBM Content Manager
 - IBM Content Manager OnDemand
 - IBM WebSphere Portal Document Manager
 - IBM WebSphere MQ Workflow
 - IBM Lotus Notes®
 - IBM Lotus® Domino® Document Manager
 - IBM FileNet Content Services
 - IBM FileNet Image Services
 - IBM FileNet Image Services Resource Adapter
 - IBM FileNet Content Manager
 - EMC Documentum Content Server
 - Microsoft Index Server/New Technology File System (NTFS)
 - Microsoft SharePoint 2003, 2007
 - Open Text Livelink
 - Hummingbird Enterprise DM
 - Read-only access to relational database systems, including IBM DB2 Universal Database, Informix and Oracle
-

Enrich portals and key business applications with prebuilt connectors

Many portals and line-of-business (LOB) applications fail to deliver their full value because they lack access to critical content sources. IBM Content Integrator brings together key content scattered across multiple repositories into your portal, and work flow processes and LOB applications, including customer relationship management (CRM) and enterprise resource planning (ERP) applications.

Extend the reach of records management initiatives using prebuilt connectors

Organizations are under pressure to comply with mandates and policies around how they store and manage their records-class content assets. The reality is that much of this content is often distributed across multiple systems. IBM Content Integrator software extends electronic records management applications to reach content stored in multiple disparate systems.

Extend access to other content repositories with additional connectors

Using the IBM Content Integrator APIs and developer services, organizations and their partners can build custom connectors to access and manage content in other repositories in the organization's environment. The APIs and developer services also support the development and integration of ECM and SOA applications for accessing and managing valuable content assets through both prebuilt and custom connectors.

System requirements

IBM Content Integrator software supports the following operating systems: IBM AIX®, IBM z/OS, Linux on z/OS, Linux and HP-UX, Sun Solaris and Microsoft Windows platforms.

For current, detailed hardware and software system requirements for IBM Content Integrator software, visit:

ibm.com/software/data/integration/db2ii/editions_content.html

Why IBM?

Enterprise content management solutions from IBM help companies make better decisions, faster by managing unstructured content, optimizing business processes and helping to satisfy complex compliance requirements. To enable you to work smarter with more flexibility, we offer a comprehensive portfolio of leading solutions and services, including industry solutions from IBM Business Partners. Our deep ECM capabilities can support your company's information agenda, allowing you to use information as a strategic asset through better business and IT alignment. IBM has provided ECM solutions to more than 13,000 companies, organizations and governments around the world, helping them remain competitive through new intelligent innovation. We can do the same for you.

For more information

To learn more about IBM Content Integrator software and other ECM products, solutions and services from IBM, contact your IBM representative or IBM Business Partner, or visit:

ibm.com/software/ecm

Get tips and collaborate with other users of the ECM suite of products from IBM. Visit the worldwide IBM ECM community at:

ibm.com/community/ecm



© Copyright IBM Corporation 2010

IBM Corporation
Software Group
3565 Harbor Boulevard
Costa Mesa, CA 92626-1420
U.S.A.

Produced in the United States of America
February 2010
All Rights Reserved

IBM, the IBM logo, and ibm.com are trademarks or registered trademarks of International Business Machines Corporation in the United States, other countries, or both. If these and other IBM trademarked terms are marked on their first occurrence in this information with a trademark symbol (® or ™), these symbols indicate U.S. registered or common law trademarks owned by IBM at the time this information was published. Such trademarks may also be registered or common law trademarks in other countries. A current list of IBM trademarks is available on the Web at “Copyright and trademark information” at ibm.com/legal/copytrade.shtml

Microsoft and Windows are registered trademarks of Microsoft Corporation in the United States, other countries or both.

Java and all Java-based trademarks are trademarks Sun Microsystems, Inc. in the United States, other countries or both.

Linux is a registered trademark of Linus Torvalds in the United States, other countries, or both.

UNIX is a registered trademark of The Open Group in the United States and other countries.

Other company, product, or service names may be trademarks or service marks of others.

References in this publication to IBM products or services do not imply that IBM intends to make them available in all countries in which IBM operates.

The information contained in this documentation is provided for informational purposes only. While efforts were made to verify the completeness and accuracy of the information contained in this documentation, it is provided “as is” without warranty of any kind, express or implied. In addition, this information is based on IBM’s current product plans and strategy, which are subject to change by IBM without notice. IBM shall not be responsible for any damages arising out of the use of, or otherwise related to, this documentation or any other documentation. Nothing contained in this documentation is intended to, nor shall have the effect of, creating any warranties or representations from IBM (or its suppliers or licensors), or altering the terms and conditions of the applicable license agreement governing the use of IBM software.

Each IBM customer is responsible for ensuring its own compliance with legal requirements. It is the customer’s sole responsibility to obtain advice of competent legal counsel as to the identification and interpretation of any relevant laws and regulatory requirements that may affect the customer’s business and any actions the customer may need to take to comply with such laws. IBM does not provide legal advice or represent or warrant that its services or products will ensure that the customer is in compliance with any law.

